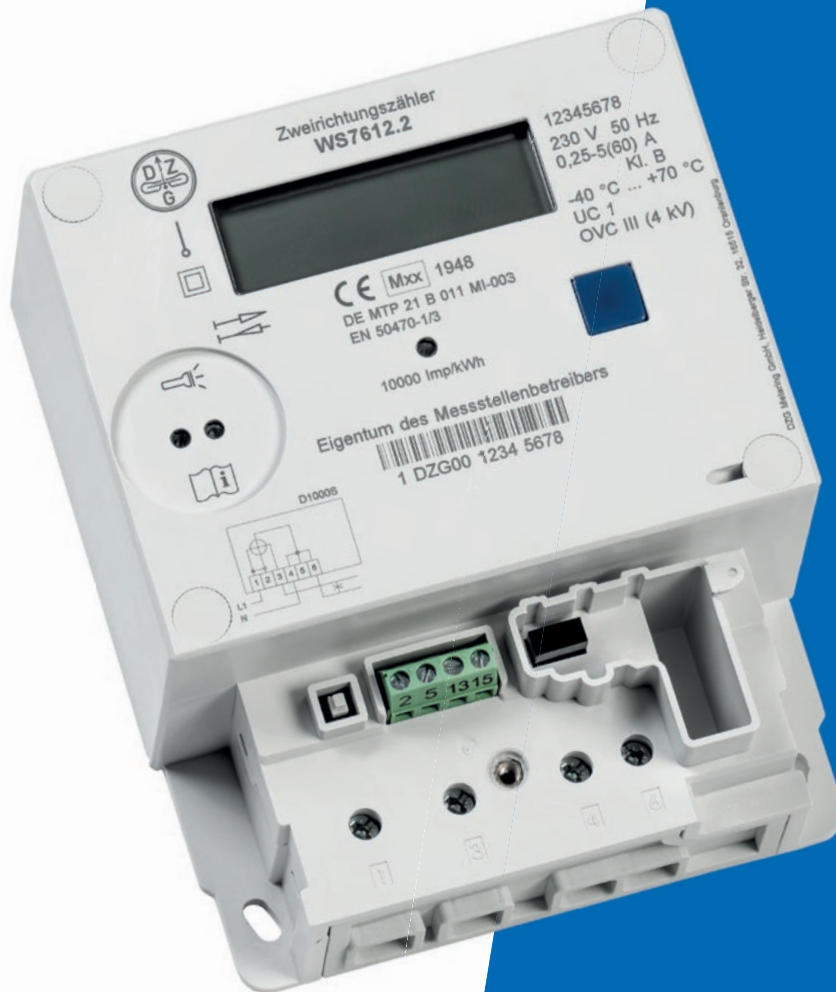


# WS76

Singe-phase meter

Modern measuring device  
(compliant with German Eichrecht)



according to FNN specifications Basic meter Functional characteristics  
Version 1.4

# Data sheet

# Modern measuring device WS76

## Type

2-wire direct-connection meter for active consumption with three-point attachment

## Functional characteristics and protocols

Legally compliant with German Eichrecht electricity meter in accordance with §29(3) and §61(3) of the Metering Point Operation Act (MsbG), as well as FNN - Basic Meter Specifications. Functional characteristics Version 1.4. This meter can be upgraded to an intelligent metering system (iMSys) according to §21(1) MsbG by means of a plug-in LMN interface.

## Measuring unit parameters

Nominal voltage $U_n$	230 V
Minimum current $I_{min}$	0,25 A
Reference current $I_{ref}$	5 A, 10 A
Limit current $I_{max}$	60 A
Actual starting current	$<0.004 I_{ref}$
Rated frequency	50 Hz
Accuracy class	Class A, Class B
Measurement type	+A (with RLS), +A/-A, -A (with RLS), -A (without RLS)
Pulse values of the LED	10,000 Imp./kWh

## Self-consumption

Voltage path	$< 1.5 \text{ W} / 8 \text{ VA}$ at $U_n$
Current path	$< 1 \text{ VA}$ with $I_{ref}$

## Temperature range

Operation	-40 °C to +70 °C
Storage and transport	-45 °C to + 85 °C

## Energy meters

Tariffless registers	1 per energy direction
Tariff registers	Option 2 registers per energy direction, switchable via external terminals or LMN interface

## Additional values

Total power	Instantaneous values +P/-P
Active power per phase	Instantaneous values $+P_{L1}/-P_{L1}$
Current per phase	Instantaneous values $I_{L1}$
Voltage per phase	Instantaneous values $U_{L1}$
Mains frequency	Instantaneous value

## Display

Version	two lines, characters according to FNN specifications Basic meter
Scope	historical consumption values, only when used as modern metering device
Data protection	configurable via PIN code
Operation	Display call-up and PIN code entry via key or optical sensor

## Data interfaces

Electrical interface for optional plug-in	LMN (according to FNN), LoRa, RS485 *)
Optical interface	IEC62056-21; 9600Baud; unidirectional (INFO interface according to FNN)

## Housing

Dimensions	with standard terminal cover approx. 190.5 x 129.5 x 68.0 (H x W x D) mm
Protection class	II
Protection class	IP 51
Material	glass-fibre reinforced polycarbonate (flame-retardant, recyclable)

## Terminal block according to DIN 62052-11

Slot for optional plug-in	1 *)
Current/neutral terminals	$\varnothing 6.5 \text{ mm}$ (slot/cross-slot PZ2 for current terminal) Version as Cage clamp terminal
Terminal cover	Optional version for plug-in terminals or short terminal cover (50 mm)

## Weight

approx. 0.6 kg

\*) Only one plug-in module per meter possible